

templates that can be customized to suit the needs of the individual demolition professional. Topics include competent person assignment, jobsite hazard assessment safety meeting sign-in sheet, job task hazard analysis, site-specific safety plan, site-specific safety training sign-off sheet and weekly safety meeting sign-in sheets.

The materials also include a model drug and alcohol program for the demolition industry and a planning document that provides project managers, estimators and supervisors an opportunity to review projects before starting work.

Another advantage for professionals who join the association is the ability to network with other members

at the annual convention. New members are offered free registration for one representative and a spouse to attend. Next year's convention will take place February 24-27, 2008, in Las Vegas.

The demolition industry is benefiting from the healthy economy and the strong scrap market right now. Those companies looking for information on regulatory and safety matters, the latest on technical products and services and general business support should go to www.demolitionassociation.com to learn more about the benefits of joining the National Demolition Association.

Michael R. Taylor, CAE, is executive director of the National Demolition Association.

Eslich Wrecking demolishes deadlines

John Eslich of Eslich Wrecking in Canton, Ohio, knew he had accepted a challenge when the company received the contract for the complete demolition of a 650,000-square-foot plant in southeastern Ohio. Armed with a highly skilled machine operator and an Allied-Gator MT Series Multi-Tool Model MTR 20 S, however, Eslich Wrecking accomplished the project in only 10 months, two full months ahead of their one-year deadline.

Eslich attributes a large portion of this accomplishment to the power and efficiency of the MTR 20 S. "We were impressed with the speed and strength of the MTR 20. It allowed us to finish everything on time and on schedule," Eslich says. "I was surprised by the productivity of a 4,000-pound tool compared to other tools in the same weight class. Typically, we would have used the next larger sized tool for the project." The MT also provided Eslich's operator the ability to work at a much quicker pace. "The operator loved the MT," says Eslich. "He said he enjoyed running the tool because it

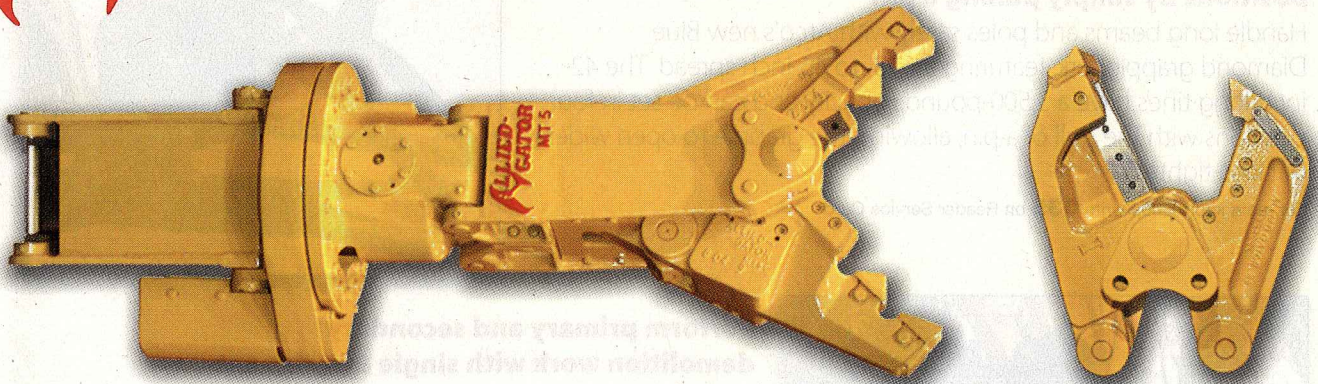
was at least 50 percent faster than any other tool he's ever run."

Eslich says the attachment allowed the entire demolition of the structure, which yielded more than 5,000 tons of structural steel, to proceed at a fast but safe pace. "It allowed us to dismantle the structure in a more orderly fashion and sort materials as we went along," says Eslich.

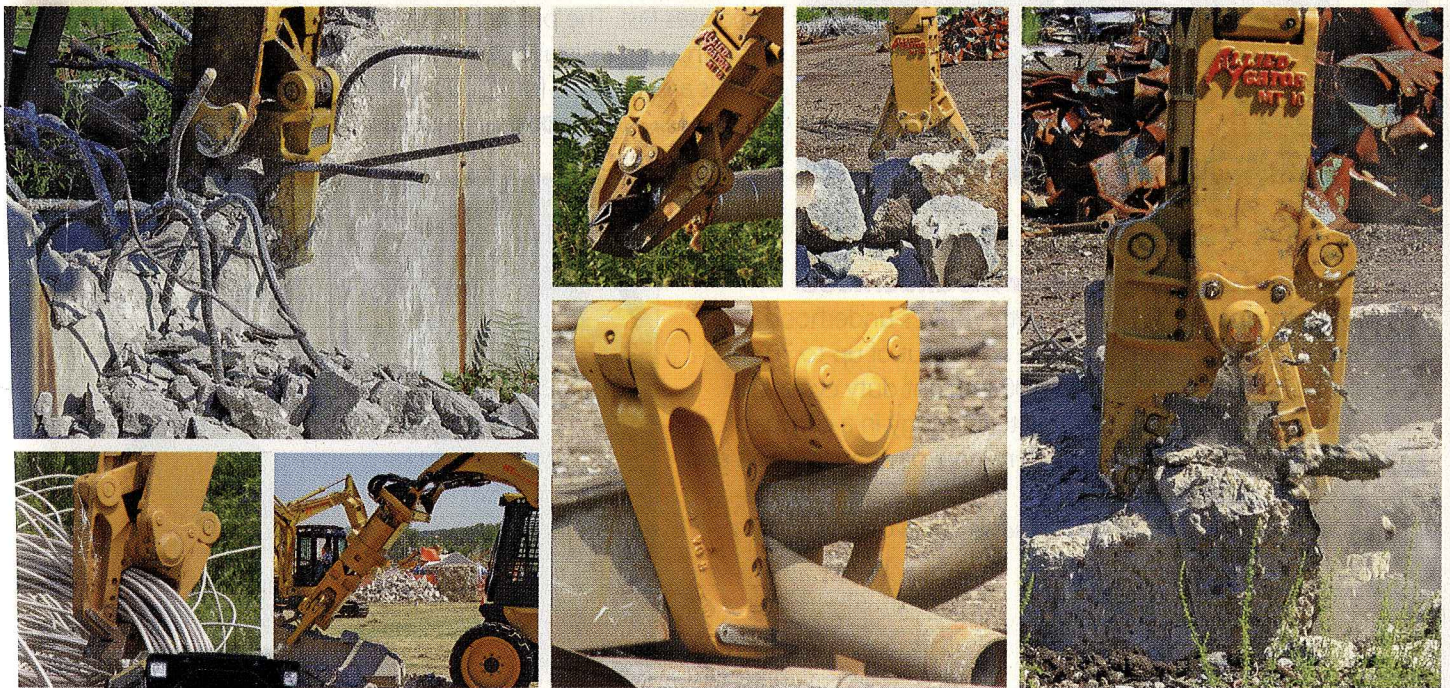
"The process was cost-effective because the MTR 20 S was powerful enough to cut down the heavy building trusses and precise enough to remove the miscellaneous steel pieces attached to them. This reduced the amount of wasted space in every truckload, as the trusses were disassembled and more manageable."

The MT Series Multi-Tool features 360-degree continual rotation and Allied-Gator Speed Circuit Technology. The Quick-Change Jaw Sets eliminate time-consuming shaft removal and hub adjustments. They can be switched in the field in as little as 15 minutes. The Multi-Tool is available in sizes ranging from 700 to 52,000 pounds. **EW**





CLICK THE  VIDEO BUTTON ON OUR WEBSITE TO WITNESS THE POWER.



MTTM SERIES MULTI-TOOLTM

SUPERIOR BY DESIGN.

- Allied-Gator's patented Quick-Change™ Jaw Sets field-change in as little as 15 minutes, maximizing versatility.
- Patented Allied-Gator Power-Link & Guide™ System generates a unique power gain throughout jaw closure and delivers unmatched force for both shearing and crushing applications.
- Exclusive dual-moving jaw design with fixed centerline closure ensures pinpoint accuracy and unparalleled operator control, maximizing overall productivity.
- Offered in sizes from 700-52,000 lbs., the MT Series Multi-Tool line accommodates more carriers than any other processing attachment.

SUPERIOR.
ANY WAY YOU LOOK AT IT.

800 624 2867

www.alliedgator.com