

Versatility in Valdez

Multi-Tool key to early completion on concurrent demolition projects

When Cuauhtemoc "Rod" Rodriguez, owner of Coldfoot Environmental in Anchorage, Alaska was awarded two large, concurrent demolition projects in Valdez, he knew his company would need the most advanced attachment technology available to complete both jobs on time.

Coldfoot project manager Ron Tharaldson began researching different attachments and manufacturers in order to overcome the imminent demands of the projects at hand. They ended up choosing an Allied-Gator MT Series Multi-Tool for its high levels of power and proven effectiveness in heavy industrial applications. Both projects provided unique chal-



An Allied-Gator MTR 20 with a Shear Jaw Set enabled Coldfoot Environmental to demolish this former fish processing plant quickly and efficiently, finishing the project substantially ahead of schedule.



The MT 20 Cracker/Crusher Jaw Set is used to process and de-rod over 11,500 cubic yards of concrete.

lenges. Both consisted of structures built with ultra heavy-duty construction, used in order to withstand the kind of extreme environmental factors that buildings must endure in Alaska.

The first project involved the complete demolition of an industrial waterfront facility formerly used as a fish processing plant. The building was within a few feet of the water's edge and was comprised mainly of structural steel columns and beams with heavy channel reinforcements, specifically designed to resist the heavy snow loads its roof would be subject to.

At the same time, on the other side of town, Coldfoot was completing required environmental remediation and was ready to begin the demolition of a former Valdez medical facility in close proximity to the city's new hospital. The new hospital required further expansion into the space obstructed by the old facility.

Built shortly after the devastating 1964 Alaskan earthquake, the old Valdez hospital facility was 78,000 square feet, and constructed entirely of heavily reinforced concrete designed to withstand earthquakes of the same magnitude. The structure consisted of 24-inch thick slabs, columns and beams with inch-and-a-quarter rebar reinforcements throughout. Even the eight-inch-thick concrete walls were filled with rebar, and the ceilings were reinforced with metal trusses.



Coldfoot Environmental used the MT Series Multi-Tool model MTR 20 to demolish an old hospital structure standing in very close proximity to the new hospital wing.

In addition to the challenges associated with the hospital structure's heavy material, Coldfoot's demolition contract stipulated that all rebar had to be removed from the concrete before it could leave the site.

In order to successfully remove and recycle two structures with such different demands using one small machine, Coldfoot utilized the patented Allied-Gator MT Series Multi-Tool model MTR 20, mounted third-member on their 25-ton excavator.

The MTR 20 weighs 4,000 pounds and features Allied-Gator's patented Quick-Change Shear and Cracker/Crusher Jaw Sets. This configuration proved instrumental to Coldfoot's early completion of both projects.

GETTING THE JOB DONE EARLY

Utilizing the MT Shear Jaw Set, Coldfoot was able to bring down the fish processing plant quickly and efficiently. During this project, the company relied on the speed and accuracy of the MT to bring down the building without problem.

According to Tharaldson, the MT saved the company hundreds of man-hours that would have been spent torch-cutting the heavy steel structure. This enabled Coldfoot to finish more than a month ahead of schedule.

During the demolition and processing of the hospital, Coldfoot began to fully appreciate the versatility of the MT's Quick-Change Jaw Sets. Although the structure contained massive amounts of reinforced concrete, there were still some structural steel components to be removed, requiring the use of both the Shear Jaw Set and the Cracker/Crusher Jaw Set.

Tharaldson was especially enthusiastic about this unique feature of the MT.

"We can go from concrete to steel beams with a simple Jaw Set change," said Tharaldson. "And we can switch back and forth very quickly. Even when we bought the MT, we didn't realize how pivotal this feature would be on our



An MT 20 Shear Jaw Set is designed for speed and accuracy. The MTR 20 weighs 4,000 pounds and features Quick-Change Shear and Cracker/Crusher Jaw Sets.

projects.”

The 4,000-pound MTR 20 with the Cracker/Crusher Jaw Set features a jaw opening of 31 inches, which enabled Coldfoot to completely demolish and de-rod all the concrete on site, producing an astounding 11,500 cubic yards (over 638 roll-off containers) of processed concrete from the hospital site alone.

More impressive still, Tharaldson explains that Coldfoot was able to demolish the entire concrete structure without the need to replace the MT's interchangeable tooth segments. With this newfound level of productivity and durability, Coldfoot estimates that the Allied-Gator MT saved their company over two months on site, and eliminated over 200 projected machine hours.

With the Allied-Gator MT Series Multi-Tool, Coldfoot Environmental has increased its ability to perform and effectively compete in heavy industrial demolition projects where time, safety and versatility are paramount.

Since MTR 20's arrival in Alaska, the company has not experienced a single breakdown or failure. This gives them a clear advantage, especially considering the remoteness of Alaskan project locations.

Allied-Gator Inc.

Reader Reply Card #1005

RECYCLING

PRODUCT NEWS

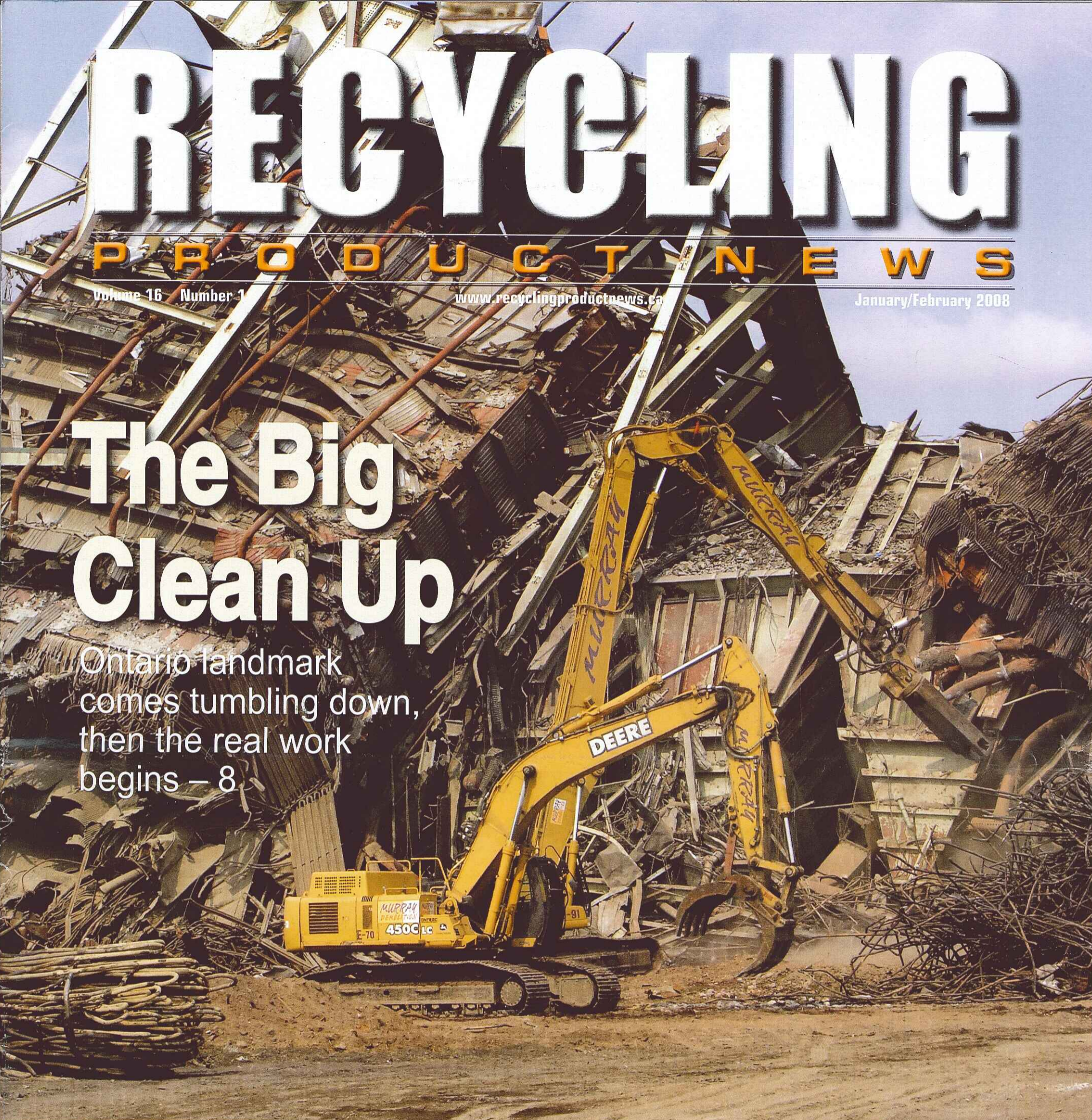
Volume 16 Number 1

www.recyclingproductnews.ca

January/February 2008

The Big Clean Up

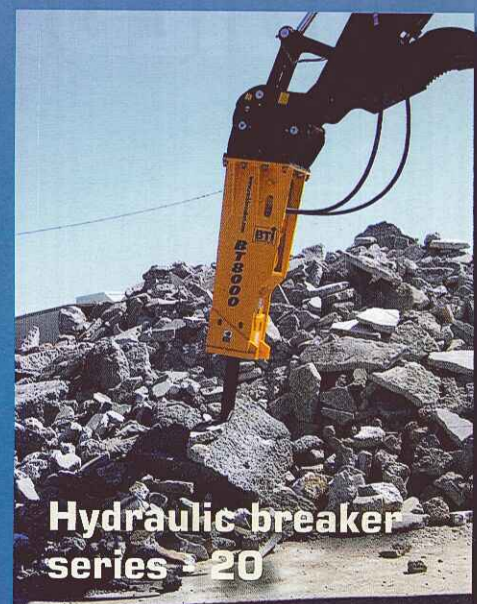
Ontario landmark comes tumbling down, then the real work begins – 8



EQUIPMENT SPOTLIGHT
Grinders & Wood Recycling - 10



Two-way split trommel
for organics - 14



Hydraulic breaker
series - 20

Focus on C&D / Wood & Organics

PUBLICATIONS MAIL AGREEMENT NO. 40069270