



ALLIED-GATOR
www.alliedgator.com **INC.**

Allied-Gator, Inc.
2100 Poland Avenue, Youngstown, OH 44502 U.S.A.
800 624 2867 • www.alliedgator.com



ALLIED-GATOR
www.alliedgator.com **INC.**

MT

PRODUCT GUIDE



INNOVATIVE HYDRAULIC ATTACHMENTS™

Copyright © 2011 Allied-Gator, Inc.
U.S. and Foreign Patents Issued and Pending

INNOVATIVE HYDRAULIC ATTACHMENTS™

RECYCLING • DEMOLITION • MATERIAL HANDLING



MT™ Design Features:

- Patented Power-Link and Guide™ System
- Patented Quick-Change™ Jaw Set Technology
- Exclusive Fixed Centerline Jaw Closure
- Continual Power Gain
- Proprietary-Grade High-Alloy Steel CAST™ Components
- Patented Allied-Gator Speed-Circuit Technology™
- Adjustment-Free Shaft/Hub Design
- Interchangeable Solid and Disposable Shear Tips
- Bolt-On, Interchangeable Tooth & Blade Segments
- Patent-Pending Universal Coupling System™
- 360° Continual Rotation
- Tool Sizes Ranging From 800-52,000 lbs.



01 - 02	MT™ SIZES / SPECIFICATIONS
03 - 04	MT QUICK-CHANGE™ JAW SETS
05 - 06	MT SHEAR JAW SET
07 - 08	MT CRACKER / CRUSHER JAW SET
09 - 10	MT DENSIFIER™ JAW SET
11 - 12	MT VERSATILITY
13 - 14	SCRAP PROCESSING APPLICATIONS
15 - 16	DEMOLITION APPLICATIONS
17 - 18	CONCRETE REMOVAL / PROCESSING
19 - 20	CAST PROCESSING APPLICATIONS
21 - 22	RAILROAD RAIL PROCESSING
23 - 24	MATERIAL HANDLING / DENSIFYING
25 - 26	MT POWER DYNAMIC
27 - 28	WITNESS THE POWER
29 - 30	MT SPEED
31 - 32	MT ACCURACY
33 - 34	MT DURABILITY
35 - 36	OTHER PRODUCTS



SIZES / SPECIFICATIONS.



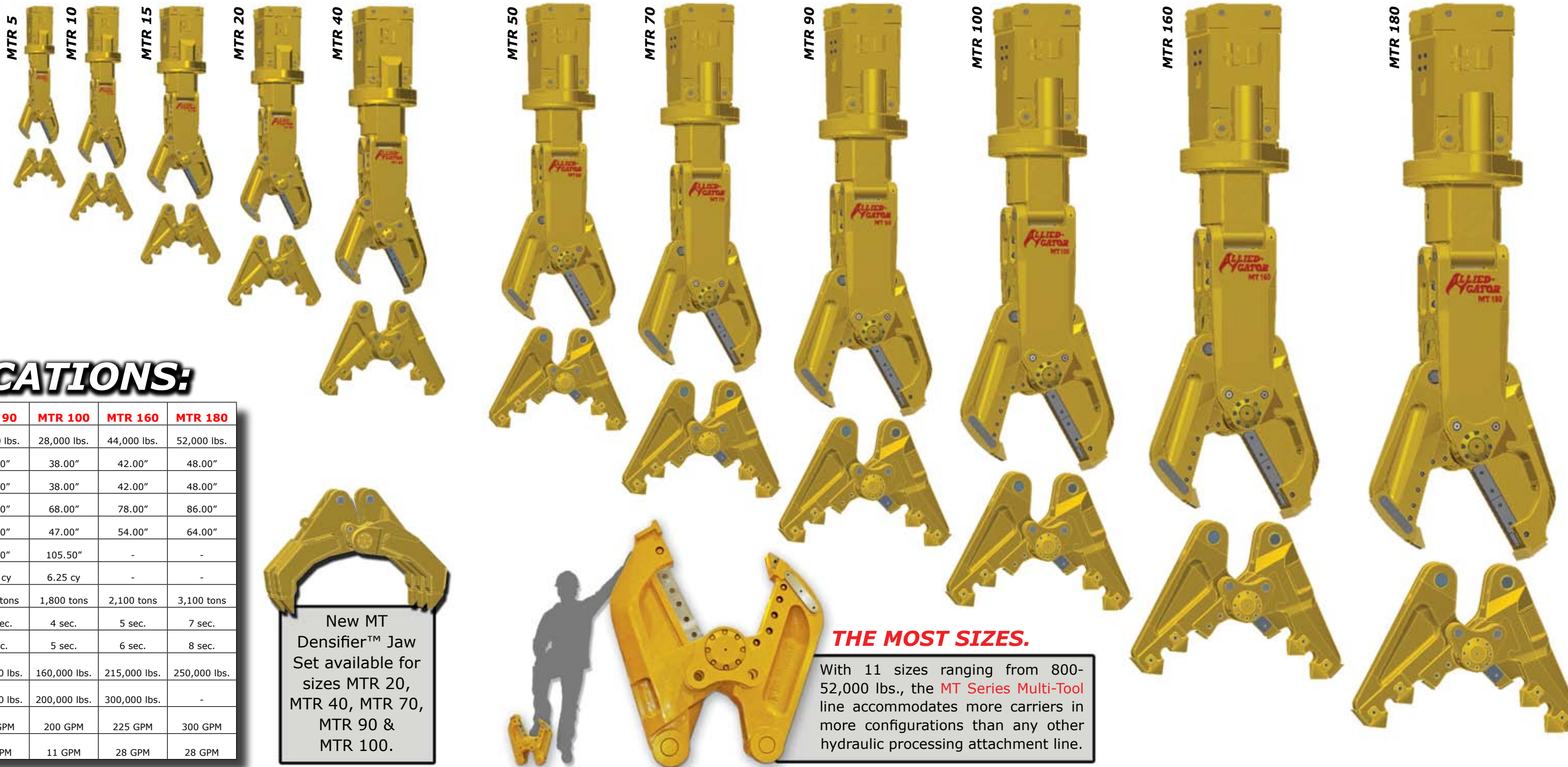
ACCOMMODATE Virtually Any Machine.

The exceptional power, versatility and productivity of the **MT™ Series Multi-Tool™** are offered in rotating sizes ranging from 800-52,000 lbs. With sizes to accommodate any machine, from skid steers and compacts to the world's largest mass excavators, the **MT Series Multi-Tool** is offered in more sizes for more configurations than any other processing attachment line.

MT™ SPECIFICATIONS:

MODEL	MTR 5	MTR 10	MTR 15	MTR 20	MTR 40	MTR 50	MTR 70	MTR 90	MTR 100	MTR 160	MTR 180
Weight*	800 lbs.	1,325 lbs.	2,700 lbs.	4,000 lbs.	7,000 lbs.	10,000 lbs.	12,500 lbs.	20,000 lbs.	28,000 lbs.	44,000 lbs.	52,000 lbs.
Shear Jaw Opening	10.00"	12.00"	16.00"	18.00"	24.00"	28.00"	32.00"	35.00"	38.00"	42.00"	48.00"
Shear Jaw Depth	10.00"	12.00"	16.00"	18.00"	24.00"	28.00"	32.00"	35.00"	38.00"	42.00"	48.00"
Cracker/Crusher Jaw Opening	18.00"	21.25"	27.00"	31.00"	38.75"	46.00"	50.75"	56.00"	68.00"	78.00"	86.00"
Cracker/Crusher Jaw Depth	12.50"	14.50"	18.50"	21.50"	27.38"	32.00"	34.75"	39.00"	47.00"	54.00"	64.00"
Densifier™ Jaw Opening	-	-	-	49.50"	54.75"	-	74.50"	87.00"	105.50"	-	-
Densifier Jaw Capacity	-	-	-	0.60 cy	1.00 cy	-	2.25 cy	3.00 cy	6.25 cy	-	-
Throat Force	140 tons	206 tons	315 tons	425 tons	685 tons	860 tons	1,043 tons	1,500 tons	1,800 tons	2,100 tons	3,100 tons
Cycle Time Close	1 sec.	1 sec.	2 sec.	2 sec.	3 sec.	3 sec.	3.5 sec.	3.5 sec.	4 sec.	5 sec.	7 sec.
Cycle Time Open	2 sec.	2 sec.	2 sec.	2 sec.	3 sec.	3 sec.	3.5 sec.	4 sec.	5 sec.	6 sec.	8 sec.
Min. Carrier Weight 2nd Member Mount**	5,000 lbs.	7,500 lbs.	13,500 lbs.	20,000 lbs.	37,000 lbs.	55,000 lbs.	70,000 lbs.	110,000 lbs.	160,000 lbs.	215,000 lbs.	250,000 lbs.
Min. Carrier Weight 3rd Member Mount**	10,000 lbs.	15,000 lbs.	26,000 lbs.	38,000 lbs.	65,000 lbs.	90,000 lbs.	110,000 lbs.	190,000 lbs.	200,000 lbs.	300,000 lbs.	-
Recommended Oil Flow - Open/Close	20 GPM	40 GPM	50 GPM	60 GPM	80 GPM	120 GPM	130 GPM	180 GPM	200 GPM	225 GPM	300 GPM
Recommended Oil Flow - Rotation (Speed Adjustable)	5 GPM	5 GPM	5 GPM	5 GPM	5 GPM	11 GPM	11 GPM	11 GPM	11 GPM	28 GPM	28 GPM

* Tool weights subject to adaptor and Jaw Set configuration. ** Minimum excavator weights subject to machine configuration.



THE MOST SIZES.

With 11 sizes ranging from 800-52,000 lbs., the **MT Series Multi-Tool** line accommodates more carriers in more configurations than any other hydraulic processing attachment line.

New MT Densifier™ Jaw Set available for sizes MTR 20, MTR 40, MTR 70, MTR 90 & MTR 100.





PATENTED
Quick-Change™
JAW SET technology
 BY ALLIED-GATOR

Every **MT™ Series Multi-Tool™** size features Allied-Gator's patented Quick-Change™ Jaw Set Technology. Allied-Gator's Quick-Change Jaw Sets retain their own shaft in order to maximize change-out efficiency and never require shaft removal and/or hub adjustments thanks to their exclusive HANDS OFF!™ Shaft Design. Manufactured from proprietary High-Alloy Steel CAST™ materials, Allied-Gator's Quick-Change Jaw Sets are sculpted to eliminate excess material and provide superior visibility to the machine operator. Allied-Gator's Quick-Change Cracker/Crusher Jaw Set affords users the distinctive ability to conquer even the most challenging cracking and crushing tasks with a single Jaw Set. This eliminates the need to purchase two separate, duty-specific jaws (one for cracking, another for pulverizing.) With the **MT Series Multi-Tool's** variety of bolt-on tooth segments, switching between cracking and crushing functions is easily accomplished in less than 5 minutes.



Patented Quick-Change™ Jaw Set Technology, developed to achieve maximum change-out efficiency, affords users the ability to switch between Jaw Sets in the field in as little as 15 minutes.



Watch
 the **MT Jaw Set**
 Change-Out
 Procedure
 at

www.alliedgator.com

CHANGING THE INDUSTRY, ONE **JAW SET** AT A TIME



MT™ Shear Jaw Set - utilized for the quick and efficient demolition and processing of heavy structural steel. Features weld-on interchangeable **Solid Tip** and **Disposable Shear Tip** options to best suit the specific demands of different materials and applications.



Disposable Tip Solid Tip



MT™ Cracker/Crusher Jaw Set - effortlessly processes reinforced concrete, heavy cast and rail materials. Features interchangeable bolt-on Tooth Segments that can be changed in under 5 minutes: **Cracker Tooth Segments** effectively penetrate heavily reinforced concrete and dense rock, and safely process cast materials. **Crusher Tooth Segments** efficiently de-rod and pulverize concrete in one bite. **Finish Tooth Segments** effortlessly send a clean, flat and controlled crack through curbs and walls. Finally, patent-pending **MT Rail Breaker Tooth Segments** effortlessly process rail and cleanly remove any concrete or asphalt bonded to the rail.

Cracker Tooth Segments

Crusher Tooth

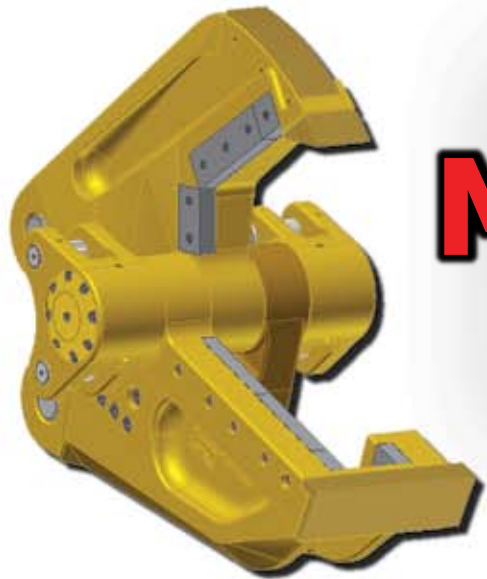
Finish Tooth

Rail Breaker Tooth Segments



MT™ Densifier™ Jaw Set - patent-pending design performs all the functions of a rotating grapple, but has the additional capability to condense scrap and other material during loading to minimize the air volume in every mouthful and maximize the material volume in every load.





Scrap Processing / Demolition

MT™ SHEAR Jaw Set

SUPERIOR BY DESIGN.

Specifically designed for full-time material processing use, the **MT™ Series Multi-Tool™** in the Shear configuration is superior to any other shearing attachment in the industry, dedicated or otherwise. The main shaft area of the MT Shear Jaw Set does not overheat and remains ambient even throughout extended use. This Jaw Set is also specifically designed to reduce friction and heat build-up to all components, lowering overall maintenance, reducing tool wear and maximizing blade life. The MT effortlessly cuts through the thicker and thinner materials that challenge other shears and virtually eliminates the choking and jamming problems associated with other products. The MT's cylinder is completely enclosed within the tool's main body at all times, keeping it protected and never leaving it vulnerable to material damage. The MT Shear Jaw Set never requires shaft removal or hub adjustments of any kind and features long-lasting, economical 4-or 8-way indexable cutter and wear blades. With the MT's superior power, the Shear Jaw Set provides excellent piercing ability and unrivaled throat force. Its sculpted shape and Fixed Centerline Closure improve operator visibility and accuracy, resulting in more consistently sized processed material and ending the struggle of operator frustration caused by awkward, clumsy designs. As an added benefit, the **MT Series Multi-Tool** in the Shear configuration works easily on paved/concrete surfaces and has an improved work range to reduce machine travel. Manufactured from proprietary High-Alloy Steel **CAST™** components, the MT is designed to provide decades of reliable performance.



MTR 50 S



MTR 40 S



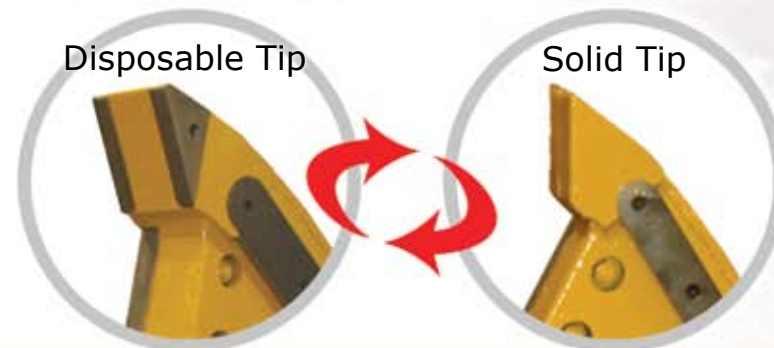
MTR 90 S



MTR 160 S



MTR 70 S



MT™ Replaceable Tip Options

Each Allied-Gator **Replaceable Tip** is an independent component to the MT Shear Jaw Set. Unlike other designs, the MT Shear Jaw Set's Replaceable Tip Options provide users with the unique ability to change between **Disposable Tips*** and **Solid Tips**** to best suit the specific demands of different materials and applications.

* available for MT sizes MT 20 - MT 180
** available for all MT sizes





Concrete Processing / Demolition / Cast Processing

MT™ CRACKER/CRUSHER Jaw Set

90°

jaw opening of the MT Cracker/Crusher Jaw Set accommodates more material and enables this tool to demolish objects that are much larger than its actual jaw opening. Enable the control and regulation of material size with different tooth configurations. With a variety of bolt-on tooth segments that interchange in less than 5 minutes, the MT Cracker/Crusher Jaw Set has the capacity to perform all cracking, crushing & rail breaking functions with maximum efficiency.



MTR 20 C



MTR 50 C



MTR 50 C

One Jaw Set, Multiple Tooth Configurations.



MTR 90 C

CRACKER TOOTH SEGMENTS

Enable maximum penetration to solid and heavily reinforced concrete and dense rock. Also used for full-time cast processing operations.



MTR 70 C

CRUSHER TOOTH SEGMENTS

De-rod and pulverize concrete in one bite, allowing contractors to demolish structures and process materials simultaneously. Also used to gather, separate and sort on-site materials.



MTR 40 C

FINISH TOOTH SEGMENTS

Effortlessly send a clean, flat and controlled crack through concrete. Used for trimming concrete and the flush removal of curbs and walls. Also used to perform precision facing and edge work.



MTR 70 C-RB

RAIL BREAKER TOOTH SEGMENTS

Effortlessly process rail and, as an added benefit, cleanly remove any concrete or asphalt that may be bonded to the rail.



Densifying / Material Handling

MT™ DENSIFIER™ Jaw Set



Allied-Gator's patented Quick-Change™ Densifier™ Jaw Set for the patented MT™ Series Multi-Tool performs all the functions of a rotating grapple, but has the additional capability to condense material during loading to minimize the air volume in every mouthful and maximize the scrap volume in every load. The MT Densifier Jaw Set not only provides precision sorting ability, but takes material handling to a new level by giving users the ability to compact and densify material with unprecedented levels of power.



The MT Densifier Jaw Set provides the same unparalleled closing force as the existing MT Shear and Cracker/Crusher Jaw Sets, utilizing Allied-Gator's patented Power-Link and Guide System™, which enables all MT Jaw Sets to cycle with a continual power gain throughout jaw closure. The MT's proprietary fixed centerline closure provides superior dexterity, while patented Allied-Gator Speed-Circuit Technology™ allows the MT Densifier Jaw Set users to maximize material handling productivity. The MT Densifier™ Jaw Set features dual-moving jaws and unrestricted 360° rotation. It is currently available in MT tool sizes MT 20, MT 40, MT 70, MT 90 & MT 100 which range in capacity from 0.6 to 6.25 cubic yds.



MTR 90 D



MTR 90 D



MTR 90 D



MTR 90 D



MTR 90 D



MTR 90 D



MTR 90 D



MTR 90 D

VERSATILITY.

The **MT™ Series Multi-Tool™** line affords users the ability to increase the tasking and performance capacities of their equipment effectively with one tool. The **MT Series Multi-Tool** obsoletes dedicated shearing and crushing attachments and surpasses all other material processors in power, performance and productivity. With the **MT Shear Jaw Set**, this tool provides superior shearing capabilities for full-time scrap metal processing and/or structural steel demolition. With equally impressive effectiveness, the **MT Cracker/Crusher Jaw Set** effortlessly reduces concrete in both demolition and processing applications. As an added benefit, the **Cracker/Crusher Jaw Set** is a safer and more cost-effective alternative to conventional cast processing methods. In order to achieve optimal performance in both cracking and crushing functions, the **Cracker/Crusher Jaw Set** comes with a variety of bolt-on tooth segments. The patented **MT Quick-Change™ Jaw Sets** interchange in as little as 15 minutes to maximize on-the-job versatility and minimize downtime.



MTR 50 S 2nd Member & MTR 70 S 3rd Member



UCS Universal Adaptor Plate for Skid Steer Mount Configuration

UCS 2nd Member Wing for Boom Mount Configuration

UCS 2nd Member Adaptor for Boom Mount Configuration

UCS 3rd Member Wing for Stick Mount Configuration

(Adaptor cylinder extended)

UCS Folding Adaptor used to achieve long boom and short boom versatility

(Adaptor cylinder retracted)

UCS TECHNOLOGY
BY ALLIED-GATOR

Unlimited interfacing capabilities are yours with patent-pending UCS™ Technology. This innovative system standardizes tool and machine compatibility, simplifying tool exchange and maximizing the interfacing capabilities of both tool and machine. UCS Technology is a standard feature on all **MT Series Multi-Tool** adaptors and is integrated into other Allied-Gator products to afford multi-configuration users the advantage of unlimited tool and machine arrangements. Experience the versatility of utilizing one tool on several machines and/or the benefits of using several different tools on one machine.



MTR 70 S - Rebar



MTR 160 S - Well Drill Pipe



MTR 70 S - Steel Tanks



MT™ Shear Jaw Set

SCRAP PROCESSING.

For full-time scrap processing, the **MT™ Series Multi-Tool™** outperforms, out-produces and outlasts every other processing attachment manufactured. The MT Shear Jaw Set is designed to flatten scrap and leave open ends on pipes, resulting in a higher quality of prepared material. These unprecedented levels of **production** translate into unprecedented levels of **profit** for its user. With its unrivaled combination of power, speed and versatility, the **MT Series Multi-Tool** is the solution to higher production demand.



MTR 70 S - Heavy Steel Cable



MTR 50 S - Structural Steel



MTR 40 S - Heavy I-Beams



MTR 70 S - Mandrel Coils



MTR 15 S - H-Beams



MTR 160 S - Railroad Car Sides

DEMOLITION.



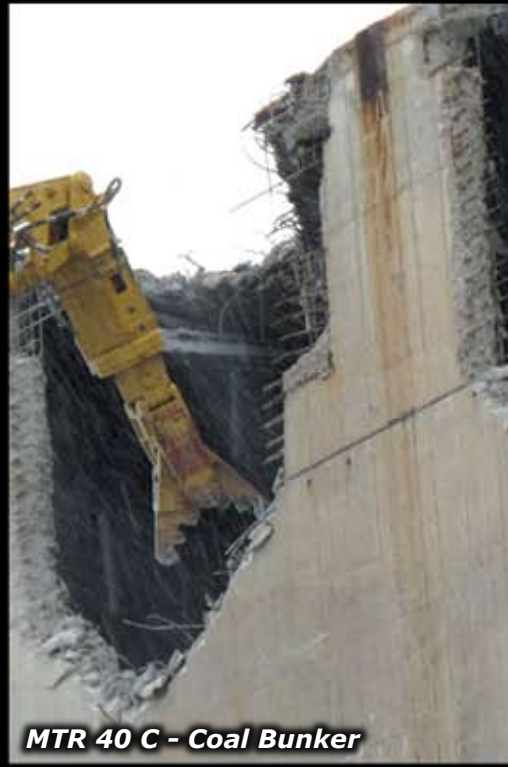
MTR 40 S



MTR 100 S - Controlled Demolition



MTR 100 S - Controlled Demolition



MTR 40 C - Coal Bunker



MTR 160 S - Offshore Oil Rig



MTR 40 C - Elevated Bridge Deck



MTR 90 S - Steel Mill Dismantling



MTR 40 C - Overpass



MTR 70 S - Conveyor Bridge



MTR 50 C - Bridge Removal



Demolition Equipment Has Never Been This Equipped.

Available in more sizes and configurations than any other processing attachment, the **MT™ Series Multi-Tool** not only gives contractors the ability to demolish structures with incredible efficiency, but also allows for simultaneous on-site material processing. In other words, the productivity of this tool allows demolition professionals to complete both demolition and processing in the time it previously took to complete the demolition process alone. The **MT Series Multi-Tool** has been specifically designed to deliver superior levels of versatility, efficiency, safety and productivity to meet and exceed every expectation of demolition contractors. Shear, crack and crush through any demolition challenge faster and more efficiently with the **MT Series Multi-Tool**.



CONCRETE REMOVAL & PROCESSING.

**MT™ Cracker/Crusher
Jaw Set**

MTR 20 C - Bridge Deck

MTR 10 C - Foundation

MTR 40 C - Post-Tension

MTR 5 C - Forms

MTR 40 C - Highway Bridge

MTR 90 C - Blast Furnace Footer

MTR 50 C - Concrete Trimming/Bridge Restoration

MTR 70 C - Heavy Retaining Wall

MTR 40 C - Onsite Crushing

MTR 10 C - Wall Removal

MTR 70 C - Heavy Footer

MTR 90 C - Ultra-Heavy Counterfort

MTR 5 C, MTR 40 C & MTR 15 C



CAST PROCESSING.

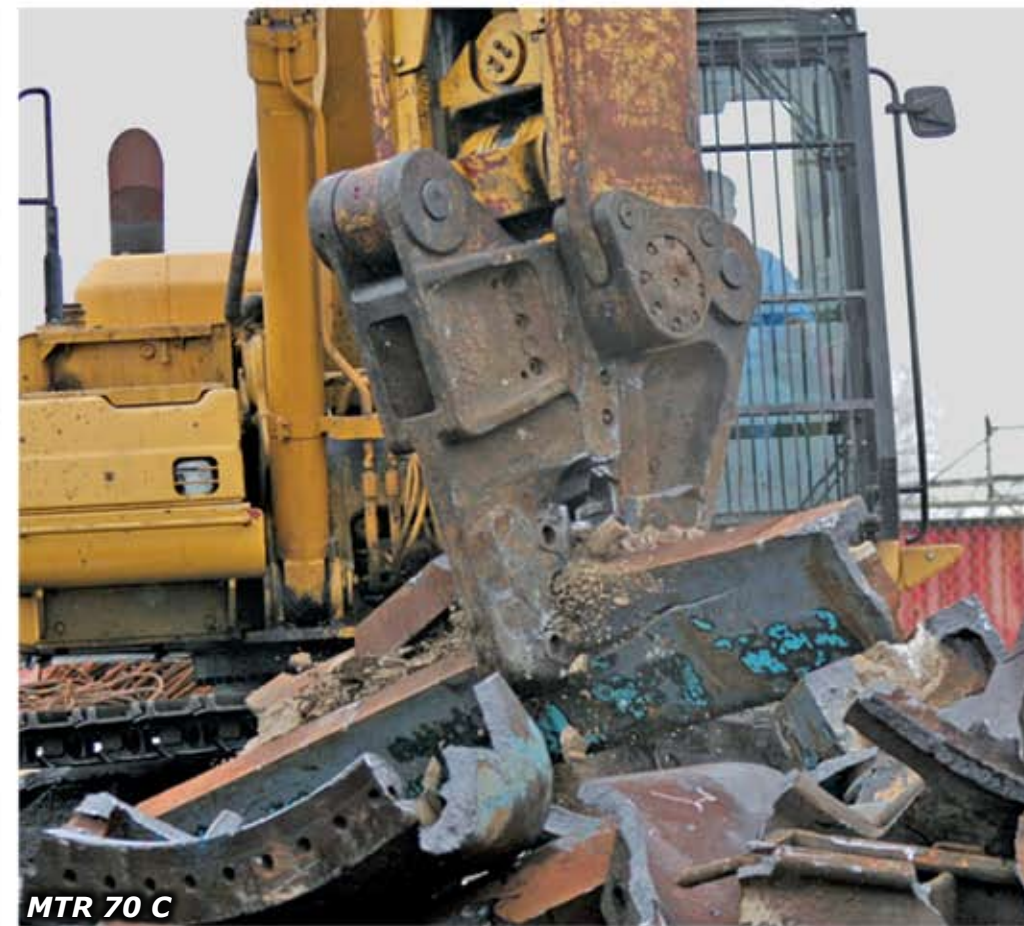
MT™ Cracker/Crusher Jaw Set

Breaking the Mold.

In the Cracker/Crusher and Densifier™ configurations, the **MT Series Multi-Tool** has emerged as the only processor powerful and durable enough to consistently and effectively process heavy cast materials. Safer and more efficient than traditional cast breaking methods, this exclusive performance feature allows users to process cast materials year-round for more time, space and cost-efficient operations.



MTR 90 D



MTR 70 C



MTR 160 C



MTR 50 C



MTR 70 C



MTR 90 C



MTR 70 C



MTR 70 C



MTR 70 C



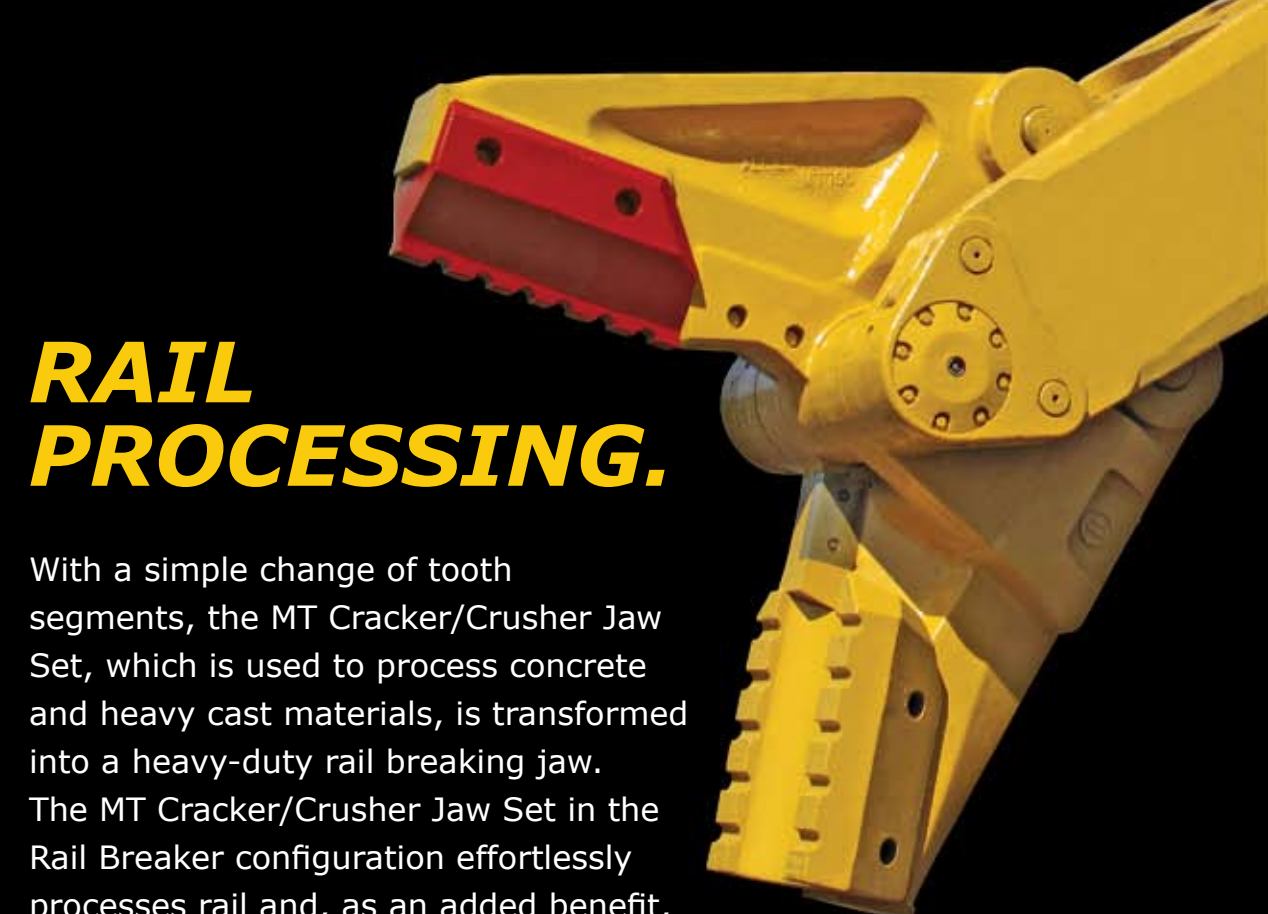
MTR 70 C



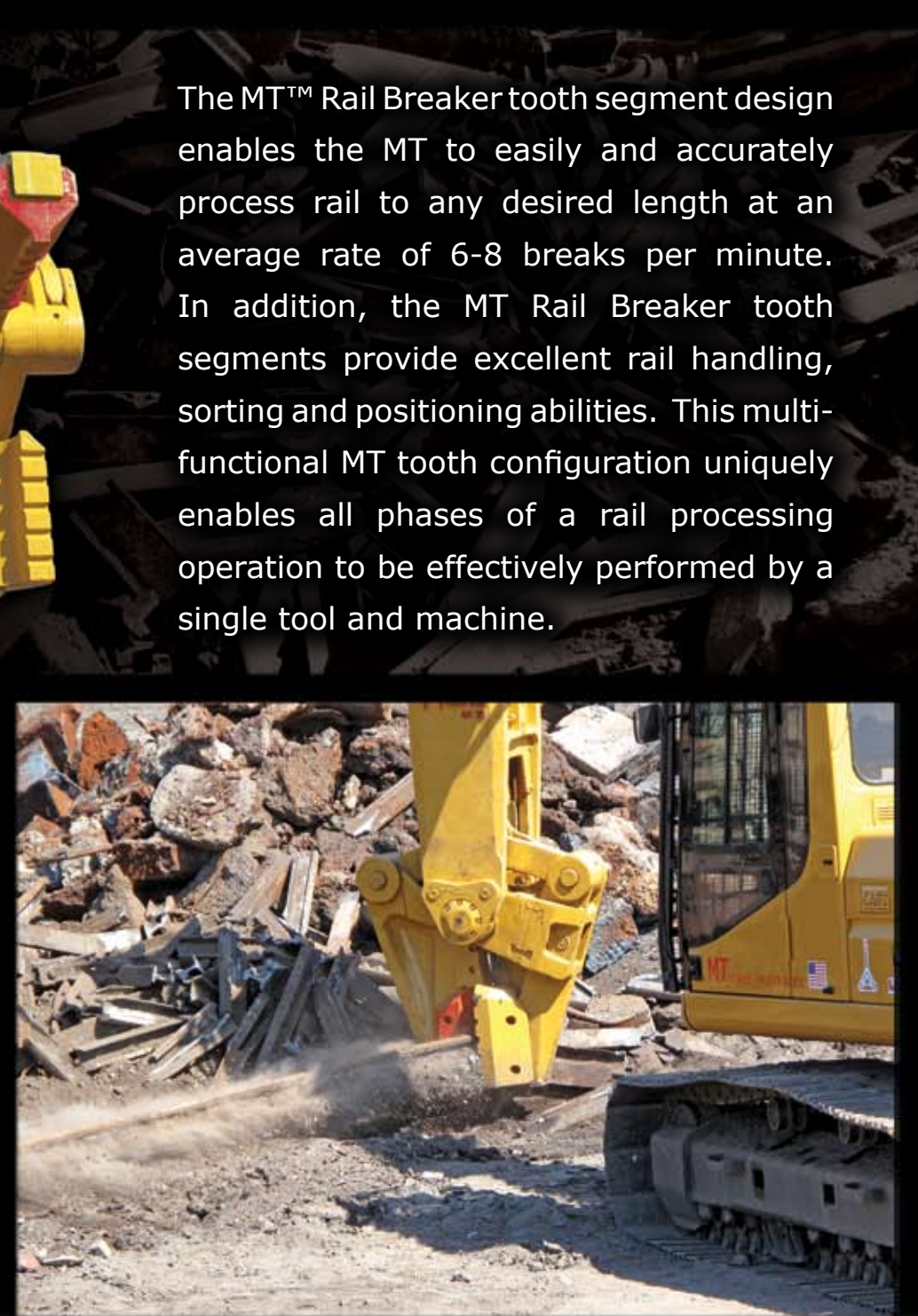
MTR 90 C



MTR 90 C



MT™ Cracker/Crusher Jaw Set with Rail Breaker Tooth Segments



The MT™ Rail Breaker tooth segment design enables the MT to easily and accurately process rail to any desired length at an average rate of 6-8 breaks per minute. In addition, the MT Rail Breaker tooth segments provide excellent rail handling, sorting and positioning abilities. This multi-functional MT tooth configuration uniquely enables all phases of a rail processing operation to be effectively performed by a single tool and machine.

RAIL PROCESSING.

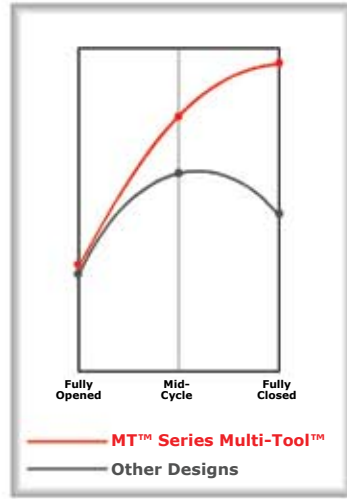
With a simple change of tooth segments, the MT Cracker/Crusher Jaw Set, which is used to process concrete and heavy cast materials, is transformed into a heavy-duty rail breaking jaw. The MT Cracker/Crusher Jaw Set in the Rail Breaker configuration effortlessly processes rail and, as an added benefit, cleanly removes any concrete or asphalt that may be bonded to the rail.



DENSIFYING & MATERIAL HANDLING.

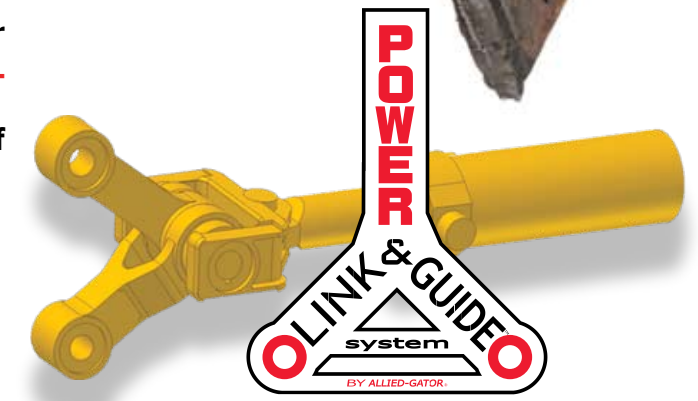


MT™ Power Gain vs. Power Curve



POWER.

The **MT™ Series Multi-Tool™**'s patented Power-Link and Guide™ System is an innovative and dynamic concept in leverage utilization. This system powers the tool jaws more efficiently by linking the tool's cylinder to a pair of levers, delivering never-before-seen levels of *real* power. Due to the force generated by this system, there is an ever-increasing power *gain* rather than the less effective power *curve* or *loss* found in other designs. From a fully open jaw position, the **MT Series Multi-Tool** dramatically increases in power with every inch of closure, resulting in a 99% mechanical-hydraulic power efficiency.



MTR 50 S



MTR 50 S



MTR 160 S



MTR 90 C



MTR 160 S



MTR 40 S



MTR 90 D



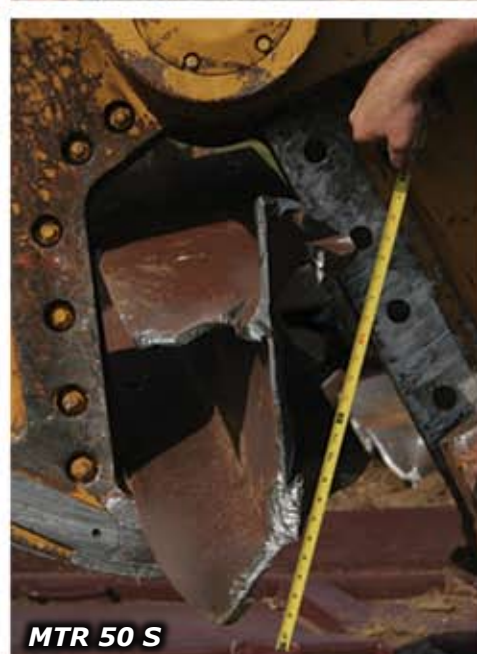
MTR 10 C



MTR 90 S

Visit www.alliedgator.com to view over 60 minutes of action-packed

footage . . . **WITNESS THE POWER.**



SPEED.

PATENTED ALLIED-GATOR®
SPEED CIRCUIT
TECHNOLOGY™



The World's **FASTEST** Cycle Speeds.

Allied-Gator Speed-Circuit Technology™ is a patented performance feature designed to dramatically increase the cycle speed of the **MT™ Series Multi-Tool™** jaws, ensuring superior production and performance levels. Allied-Gator Speed-Circuit Technology is fast and smooth, providing unnoticeable transitions/shifts from speed to power with a shock-free circuitry design. Allied-Gator Speed-Circuit Technology uses fewer flow paths, which results in silent operation and reduced possibility of additional heat generation to the tool or machine's hydraulic system. The proprietary Direct Port System is used to completely eliminate hose failures that are inherent in other "speed valve" designs. The proven reliability, performance, and production output benefits of Allied-Gator Speed-Circuit Technology are available on **MT Series Multi-Tool** sizes MTR 15 through MTR 180.



ACCURACY.



Predictability, Accuracy & Safety

The MT™ Series Multi-Tool™ provides an unmatched level of dexterity to the machine operator. Its sleek design and exclusive Fixed Centerline Closure provide perfect visibility and eliminate awkward, clumsy operation, enhancing the operator's ability to see and making every cut and crush more accurate. Cycle speed is consistent and virtually unchanged by material volume for smooth, safe and predictable tool performance.



MTR 160 S



MTR 50 C



MTR 20 S



MTR 10 C



MTR 90 D

DURABILITY.

Designed to Last...

With every ounce of its original power and performance levels, the first **MT™ Series Multi-Tool™** has now been continuously performing for over 22,000 hours in some of the most brutal scrap processing and demolition environments imaginable. Working effectively well outside the average lifespan of any other processing or demolition attachment of its kind, the first **MT Series Multi-Tool** has never experienced a component failure or a non-wear part replacement.

Measure the life of your tool in **DECADES, not HOURS.**

In extreme work environments, tools constructed from steel plate do not have the ability to withstand directional forces like the **MT™ Series Multi-Tool™**. Allied-Gator uses proprietary-grade High-Alloy Steel CAST™ material in every **MT Series Multi-Tool**. Unlike conventional steel plate designs, the **MT Series Multi-Tool** is manufactured utilizing state-of-the-art design techniques and manufacturing methods, yielding a much stronger, lighter and more efficient attachment.



MTR 10 S

MTR 70 S

MTR 70 S



MORE PRODUCTS.

ALLIED-GATOR® CLAW BUCKET™ PATENTED

SUPERIOR FUNCTIONALITY.

The patented Allied-Gator Claw Bucket™ increases the performance capabilities of any OEM loader bucket, adding superior functionality for material handling, sorting, and compaction. The Claw Bucket is more than strong enough to withstand the tractive force of the machine; once the Claw is clamped shut, it cannot be pried open. From the fully enclosed hydraulic cylinders to the high quality materials and construction, the Allied-Gator Claw Bucket is designed to work harder and last longer than any other bucket closure system. The Allied-Gator Claw Bucket makes material handling faster and more profitable. Grab, tear, sift, sort and transport more material in less time and with less equipment than ever before. Allied-Gator's proprietary two-pin installation and removal system makes it quick and easy to switch between a standard bucket configuration and the Claw Bucket configuration on the job site.



MT™ SERIES MAG EXTENSION™

featuring patent-pending



AN INDUSTRY FIRST.

The Allied-Gator MT™ Series Mag Extension™ provides contractors an extremely effective and cost-efficient alternative to designating a machine as a specialized material handler. This product adds extraordinary magnet capabilities to any ordinary excavator, featuring a unique range of motion and enhancing the work range of both magnet and machine. To maximize its versatility, the MT Series Mag Extension features the same *patent-pending* UCS™ Technology used in the MT™ Series Multi-Tool line. Together, the MT Series Multi-Tool and Mag Extension provide a single machine the distinctive ability to perform demolition, processing, material handling and site clean up, eliminating the need for several machines bound to single-duty functions.

